



Inline Vision System

Videojet 5240

Simple user interface and proven reliability of the Videojet 5240 Character Legibility System helps enable accurate detection of printed text and codes.

Ensure printed code presence and readability.

Seamless integration in a production line.

Improve quality and optimize production efficiency.



- Take a photo of the text
- Process the image and attempt to recognize characters
- Compare each character against a set of allowed characters (alphabet)

Consumer Confidence

- Increase accuracy of variable data (e.g. Expiry Date or Best Before) ensuring that the information provided to the consumer is fully readable
- 100% quality-inspected products placed into the market
- Maintain Brand quality with consistently readable text information

Setup made easy

- Setup time is minimized by integral SKU/article management
- Legibility tolerances setup is simplified by a user friendly operator interface

Communication & Connectivity

- Remove potential for human error with suite of line integration and code management capabilities
- Management of marking system codes directly from the Vision controller
- Multiple cameras/printers can be connected together and be setup from a central point

Production Efficiency

- Reduce costs caused by rework, recalls and scrap
- Fast and reliable set-up and change-over ensures high OEE
- End-of-Batch report gives Production Managers the best traceability for quality issues

Videojet 5240

Inline Vision System

User interface and software

Laetus NAVIGATOR for MS Windows®

Languages

English

Further languages at request

Inspection System

Inspector wt621 smart camera system, 1280x 1024 Pixel, monochrome, max. 50 fps, embedded operating system, 1 Trigger input, 3 input signals for future use, 4 result outputs, integrated LED lighting red/blue, LED class 1, strobe control of external lighting, integrated 9.6 mm lens with software adjustable focus, reading distance 70 ... 1.500 mm, optical indicators (5x status display, 10x LED bar, 1 green feedback), beeper/buzzer, connectivity prepared for Profinet, EtherNet, EtherCAT, PROFIBUS DP

Character Legibility Application

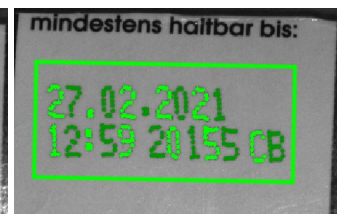
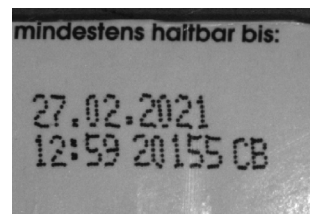
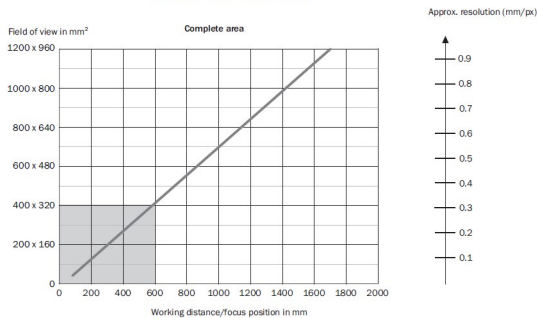
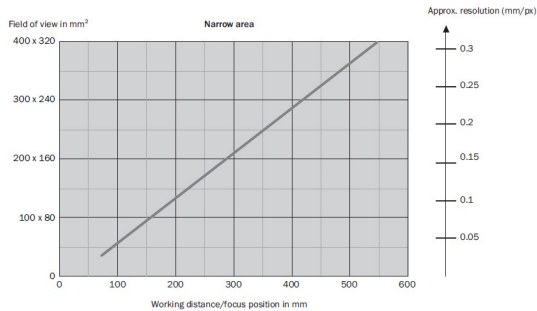
Quality-based character legibility function, adjustable quality and number of character threshold. Configurable print analysis, application tracker tool.

Inspection Line speed capability

Depends on application, typically up to 15 Hz

Working Distance / Field of View

Note: 17.1 mm lens not available



Environmental protection

Inspection camera IP65

Option- stainless steel cabinet IP54 (fan less)

Temperature/humidity range

0°C to 50°C (32°F to 122°F)

0% to 90% RH non-condensing

Electrical requirements

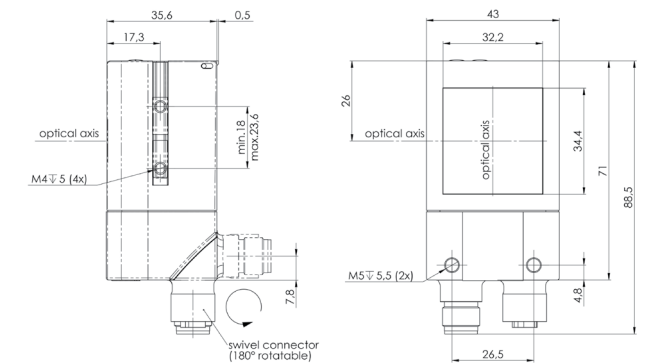
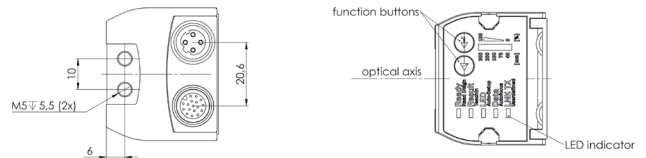
100-240 VAC at 50/60 Hz, approx.. 60W, 24V / DV 240W power supply included

8-port Ethernet Switch included

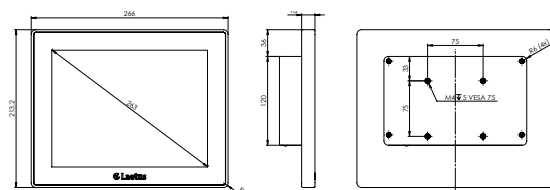
Package Options

COMMANDER 110S, 10" Touch Panel, Windows 10 IoT Enterprise operating system, 128GB SSD

Electrical cabinet, stainless steel, incl. 24V DC power supply, 8-port Ethernet switch, terminal blocks for 2 inspection cameras, Fault stop signal and indicator



Inspector wt621



COMMANDER 110S

Call **+41 (0)62 388 33 33**

Email **info.switzerland@videojet.com**

or visit **www.videojet.ch**

Videojet Technologies Suisse GmbH

Gummertliweg 7

4702 Oensingen

© 2021 Videojet Technologies Inc. — All rights reserved.

Videojet Technologies Inc.'s policy is one of continued product improvement. We reserve the right to alter design and/or specifications without notice.

Part No. SL000697
ss-5240-char-legibility-en-ch-0721

